

MASCA

Colors of *Beauty*

*Italian light experience*



MASCA

Il colore genera emozioni ma può vivere solo grazie alla luce.

Un'illuminazione adeguata non solo completa un arredamento ma condiziona lo stato d'animo, altera le percezioni, modifica le forme.

Ogni elemento, superficie e decoro appaiono privi di anima se non vengono accarezzati dal dolce tocco della luce.

E' la luce quindi il trait d'union tra l'uomo e l'ambiente in cui vive.

Inserendo una creazione Masca all'interno del nostro arredo si percepisce tutto questo nell'arco di un attimo.

Grazie ad essa si accendono i nostri sensi che danno colore alle nostre emozioni.

#### **I colori della bellezza.**

Color evokes emotions but it only comes to life thanks to light.

Appropriate lighting not only completes furnishings but also influences the mood, perceptions and shapes of interior design.

Every unit, surface and decoration is soulless if it is not bathed in soft light.

Light is therefore the unifying trait between man and the environment in which he lives.

By installing a Masca creation in your home this can be perceived instantly.

The perception stirs our senses and colors our emotions.

#### **Colors of beauty.**

Цвет порождает эмоции, но он существует только благодаря свету.

Подходящий свет не только дополняет интерьер, но и влияет на состояние души, усиливает восприятие, меняет формы.

Любой элемент, поверхность или декор кажутся лишенными души, если они не обласканы сладким прикосновением света.

Свет - это связующее звено между человеком и пространством, в котором он проживает.

Поместив творение от Masca в интерьер, это становится очевидным уже спустя мгновение.

Благодаря этому освещению зажигаются все чувства, которые дарят цвета эмоциям.

#### **Цвета красоты.**

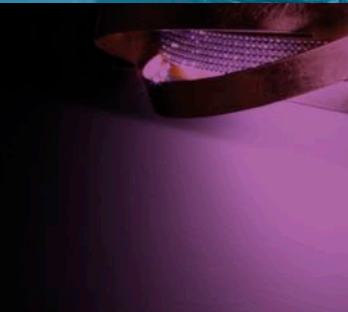
**Leonardo Scagli**  
President



SIBERIA  
*pag 8*



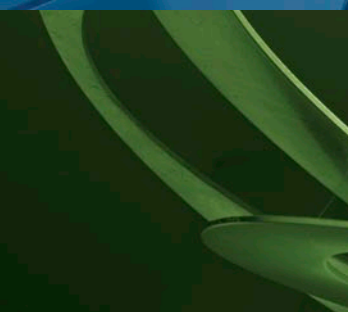
MARRAKECH  
*pag 18*



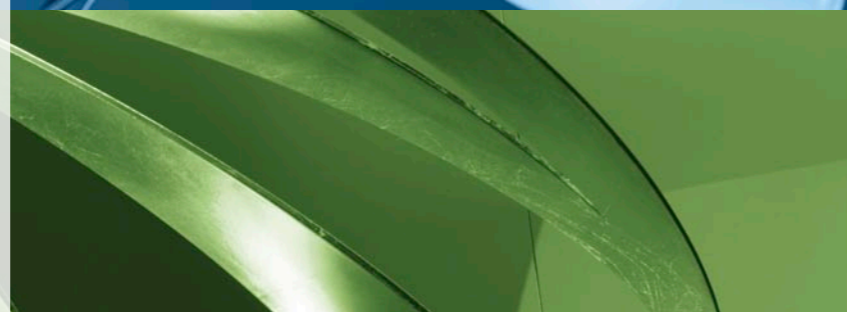
VIRGOLA / TWIST  
*pag 24*



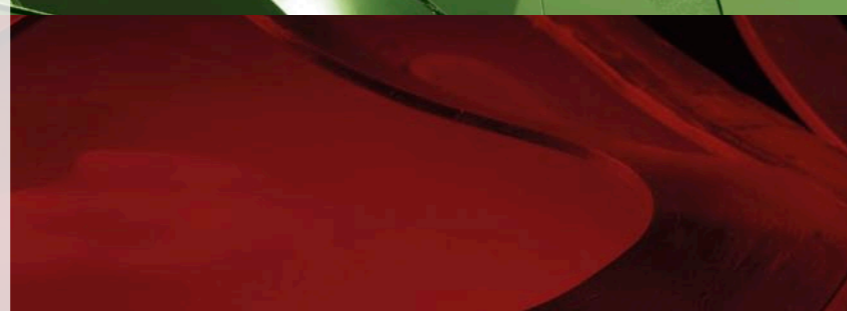
ARMONIA  
*pag 30*



LOOP  
*pag 36*



GIOIELLO  
*pag 42*



DOGE  
*pag 48*



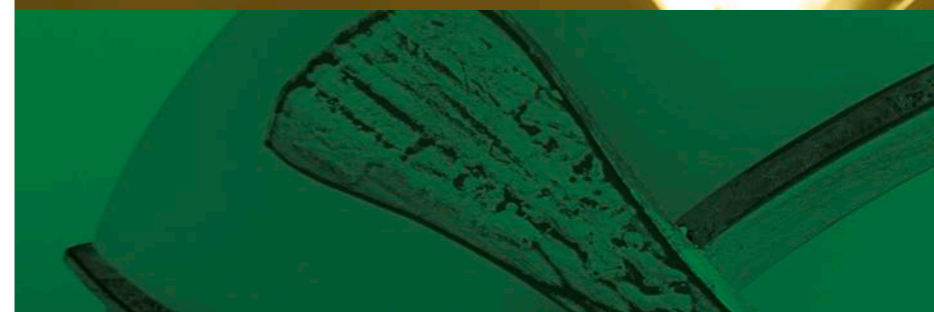
IRIDE  
*pag 52*



PARFUM  
*pag 58*



FLORENTIA  
*pag 66*



TUSCANIA  
INTRECCIO  
*pag 72*



SHANGHAI  
*pag 78*





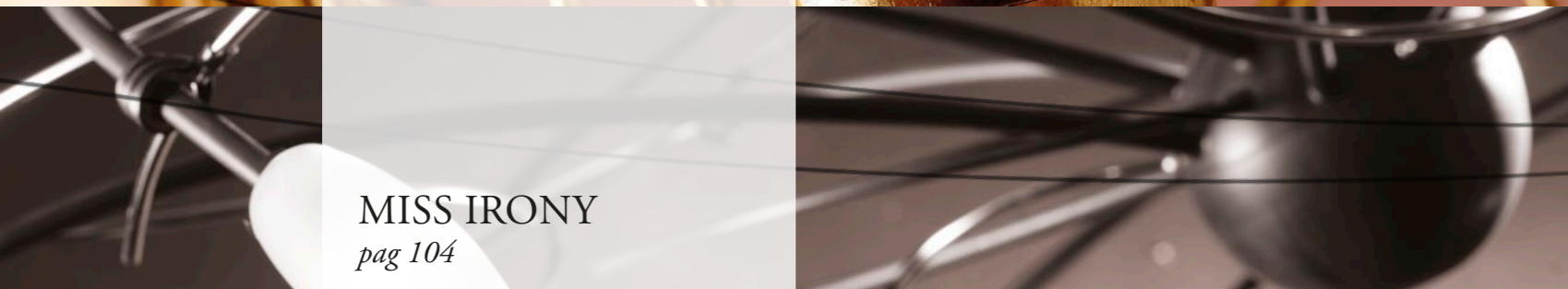
LUNA  
*pag 84*



FONTANA  
*pag 90*



FUTURA  
*pag 96*



MISS IRONY  
*pag 104*

Colors of *Beauty*



# SIBERIA

*designer* Arch. Leonardo Scagli



↑ **1818/10 SIBERIA Oro acido**  
Glass 414 - Ø cm 104x92 h  
Hal 10 x max 60W G9

↗ **1818/5PL SIBERIA Oro acido**  
Glass 414 - Ø cm 80x40 h  
Hal 5 x max 60W G9

→ **1818/A2 SIBERIA Oro acido**  
Glass 414 - h cm 40x40x24  
Hal 2 x max 60W G9





← **1818/1SG SIBERIA Argento acido**  
Glass 500 - Ø cm 21x35 h  
Electronic Lamp E27 max 30W

↖ **1818/A2 SIBERIA Argento acido**  
Glass 414 - h cm 40x40x24  
Hal 2 x max 60W G9

↑ **1818/5 SIBERIA Argento acido**  
Glass 414 - Ø cm 64x74 h  
Hal 5 x max 60W G9





↑ **1818/A1 SIBERIA Bianco oro**  
 Glass 414 - h cm 40x12x22  
 Hal max 40W G9



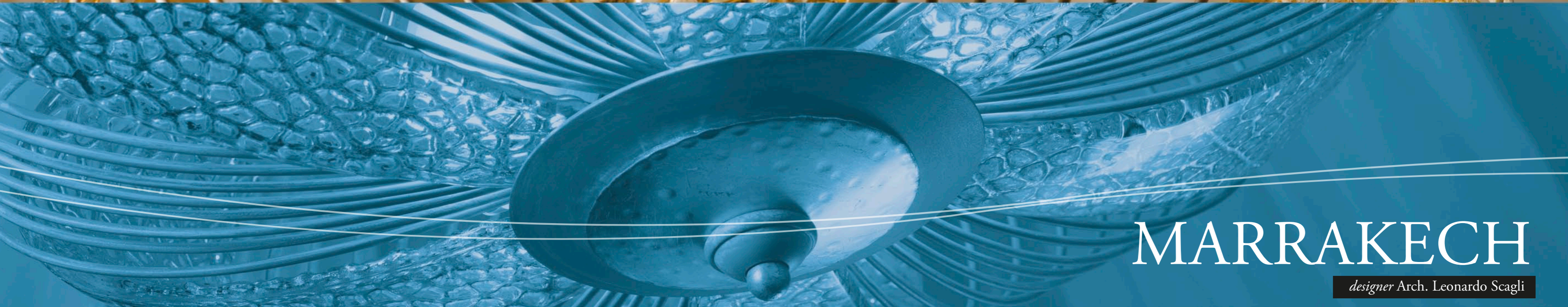
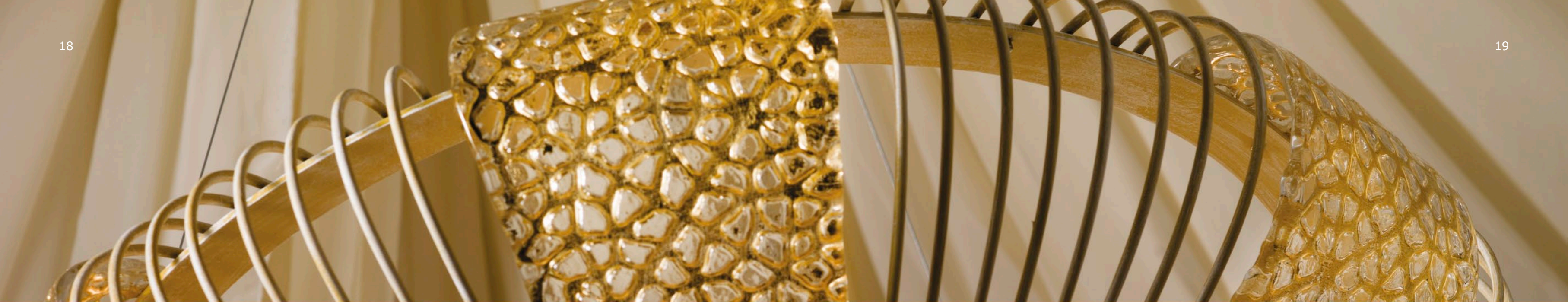
→ **1818/16 SIBERIA Bianco oro**  
 Glass 414 - Ø cm 120x120 h  
 Hal 16 x max 60W G9



← **1818/P1 SIBERIA Argento acido**  
Glass 500 - Ø cm 32x180 h  
Hal max 150W E27

↖ **1818/3SR SIBERIA Argento acido**  
Glass 414 - Ø cm 40 x max 80 h  
Hal 3 x max 40W G9

↑ **1818/24 SIBERIA Bianco oro**  
Glass 498 - Ø cm 190x183 h  
Hal 24 x max 60W G9



# MARRAKECH

*designer* Arch. Leonardo Scagli





← **1871/9S MARRAKECH Corten argento**  
 Glass 593 - Ø cm 102 x h min 55 - max 130  
 Hal 9 x max 60W E14

↑ **1871/A1 MARRAKECH Corten Argento**  
 Glass 592 - h cm 32x44x13  
 Hal max 150W R7s



↑ **1871/6S MARRAKECH**  
**Oro decapé**  
 Glass 592 - Ø cm 64 x h min 55 - max 100  
 Hal 6 x max 40W G9

↗ **1871/6PL MARRAKECH**  
**Oro decapé**  
 Glass 592 - Ø cm 64x30 h  
 Hal 6 x max 40W G9

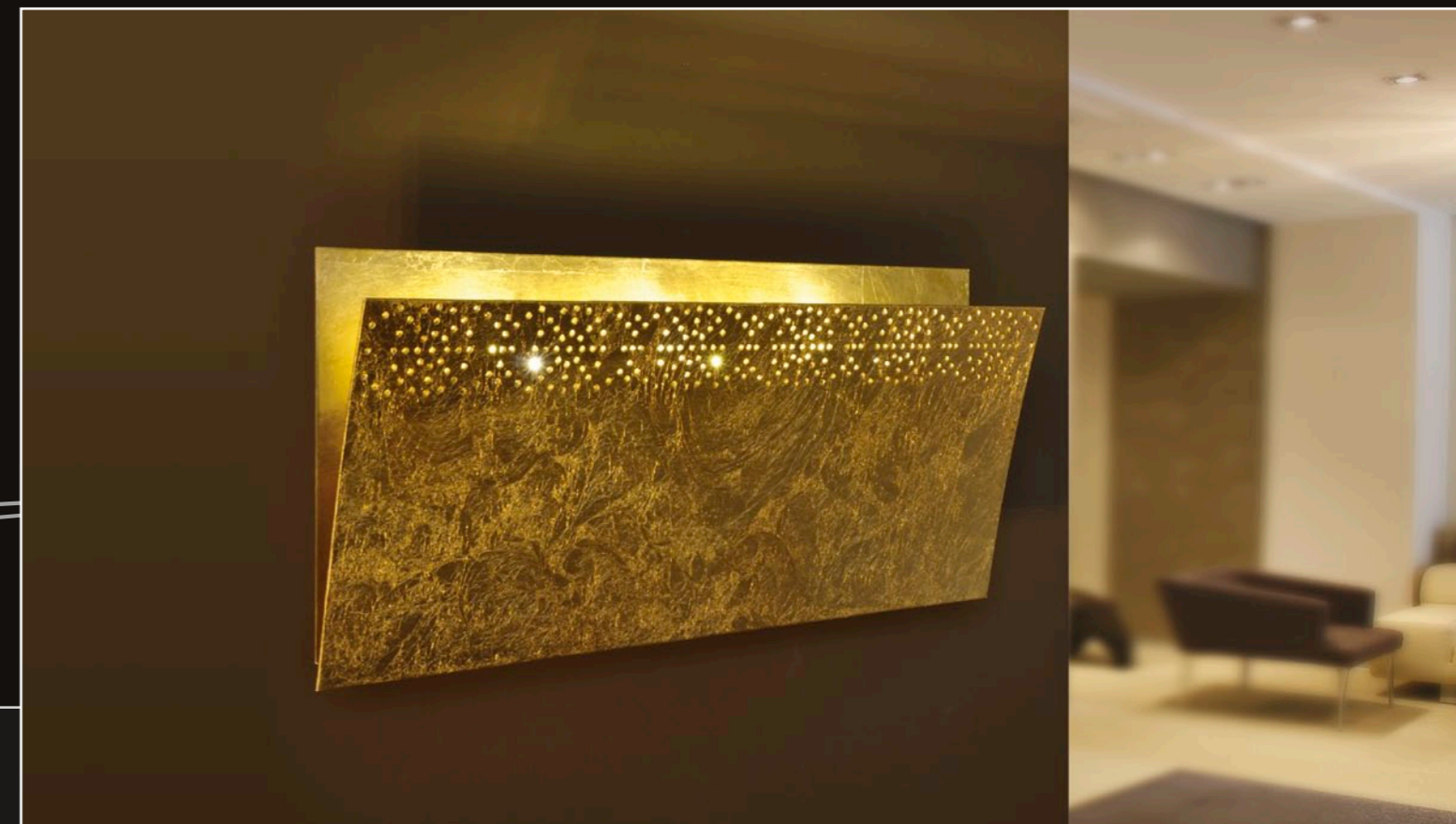
→ **1871/A1 MARRAKECH**  
**Oro decapé**  
 Glass 592 - h cm 32x44x13  
 Hal max 150W R7s



# TWIST / VIRGOLA

*designers* Arch. Marzia Bandini e Arch. Massimo Sacconi

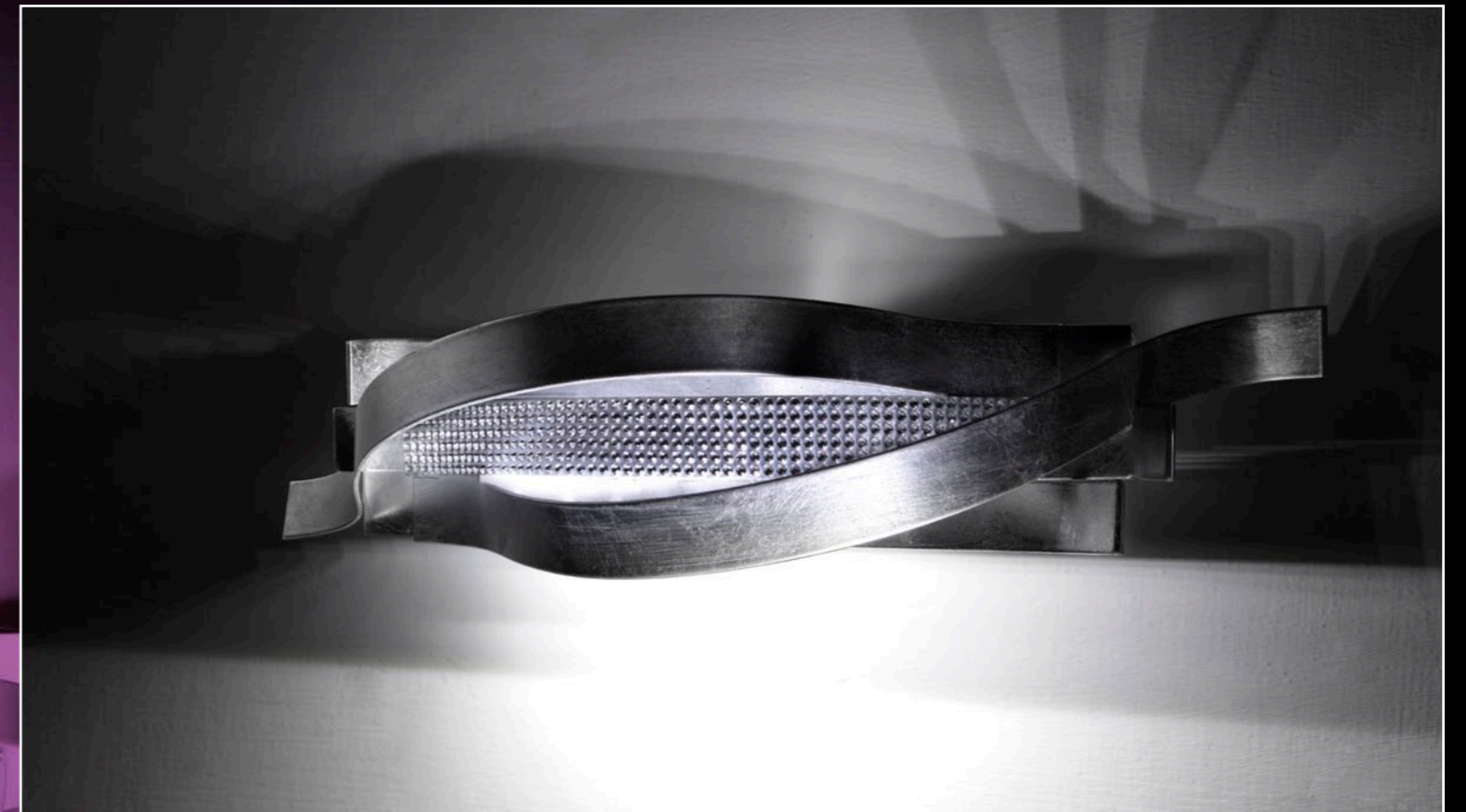




↑ **1855/A2L VIRGOLA Gesso**  
h cm 25x6x8  
2 x 1,2W LED

↗ **1855/A2P VIRGOLA Oro fris **  
h cm 16x10x10  
2 x 1,2W LED

→ **1855/A3 VIRGOLA Oro fris **  
h cm 13x8x30  
3 x 1,2W LED



↑ **1857/3PL TWIST Oro**  
Glass 590 - h cm 21x50x59  
Hal 3 x max 150W E27

↗ **1857/A2 TWIST Argento**  
h cm 7x33x10  
5 W LED + 0,5W strip LED

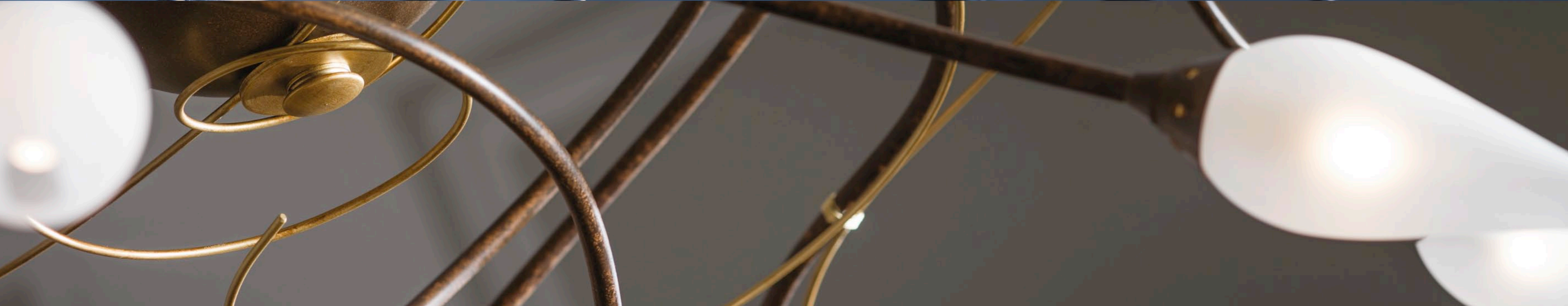
→ **1855/A1E VIRGOLA Oro fris **  
h cm 16x8x5  
1,2W LED





# ARMONIA

*designer* Arch. Leonardo Scagli





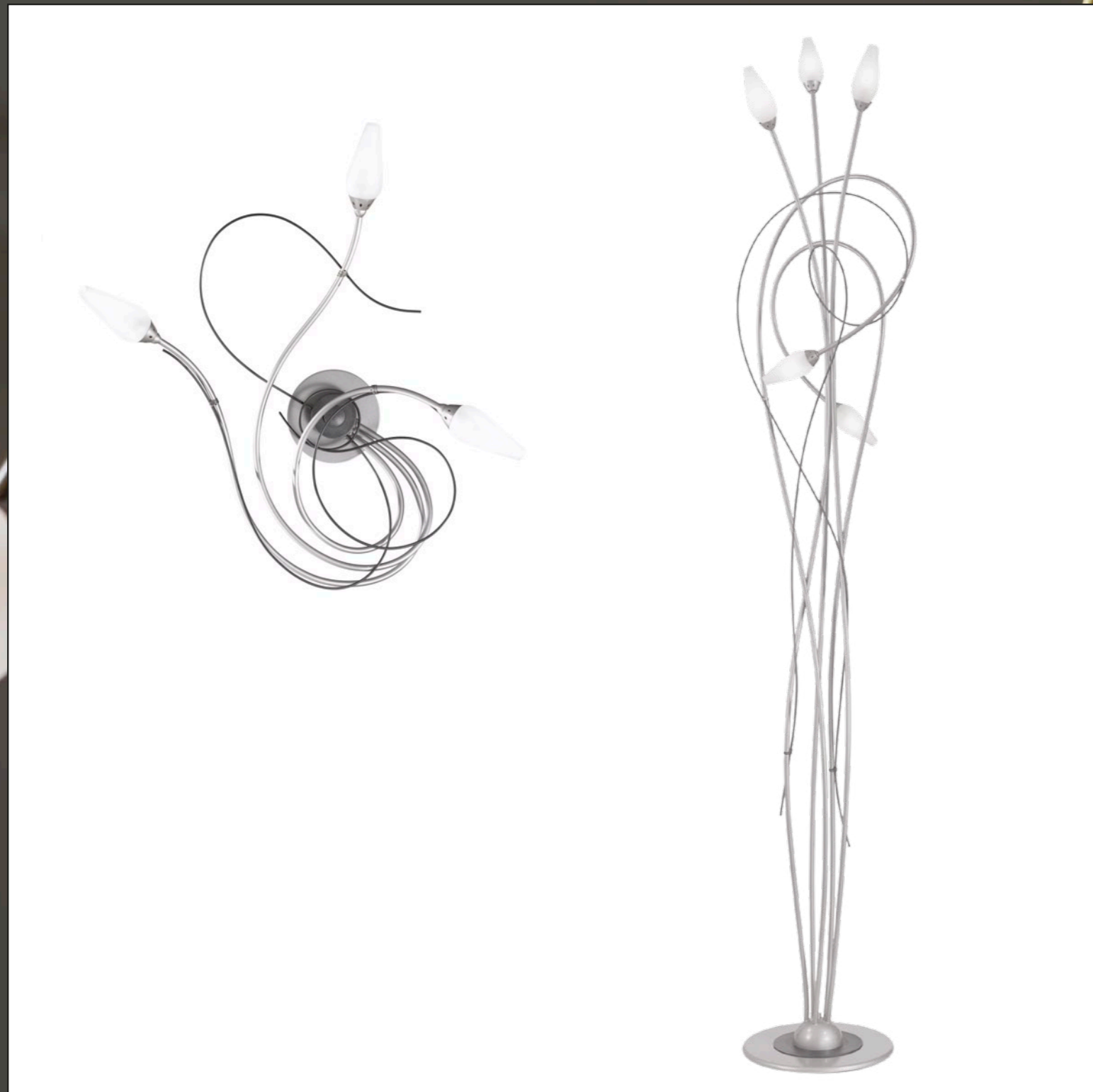
↙ **1832/3PL ARMONIA**  
**Tabacco oro**  
 Glass 505 - Ø 42x25 h  
 Hal 3 x max 40W G9

← **1832/A2 ARMONIA**  
**Tabacco oro**  
 Glass 505 - h 43x34x16  
 Hal 2 x max 40W G9

↘ **1832/B1 ARMONIA**  
**Tabacco oro**  
 Glass 505 - Ø cm 12x42 h  
 Hal max 40W G9

↑ **1832/6 ARMONIA**  
**Tabacco oro**  
 Glass 505 - h cm 38x90x52  
 Hal 6 x max 40W G9



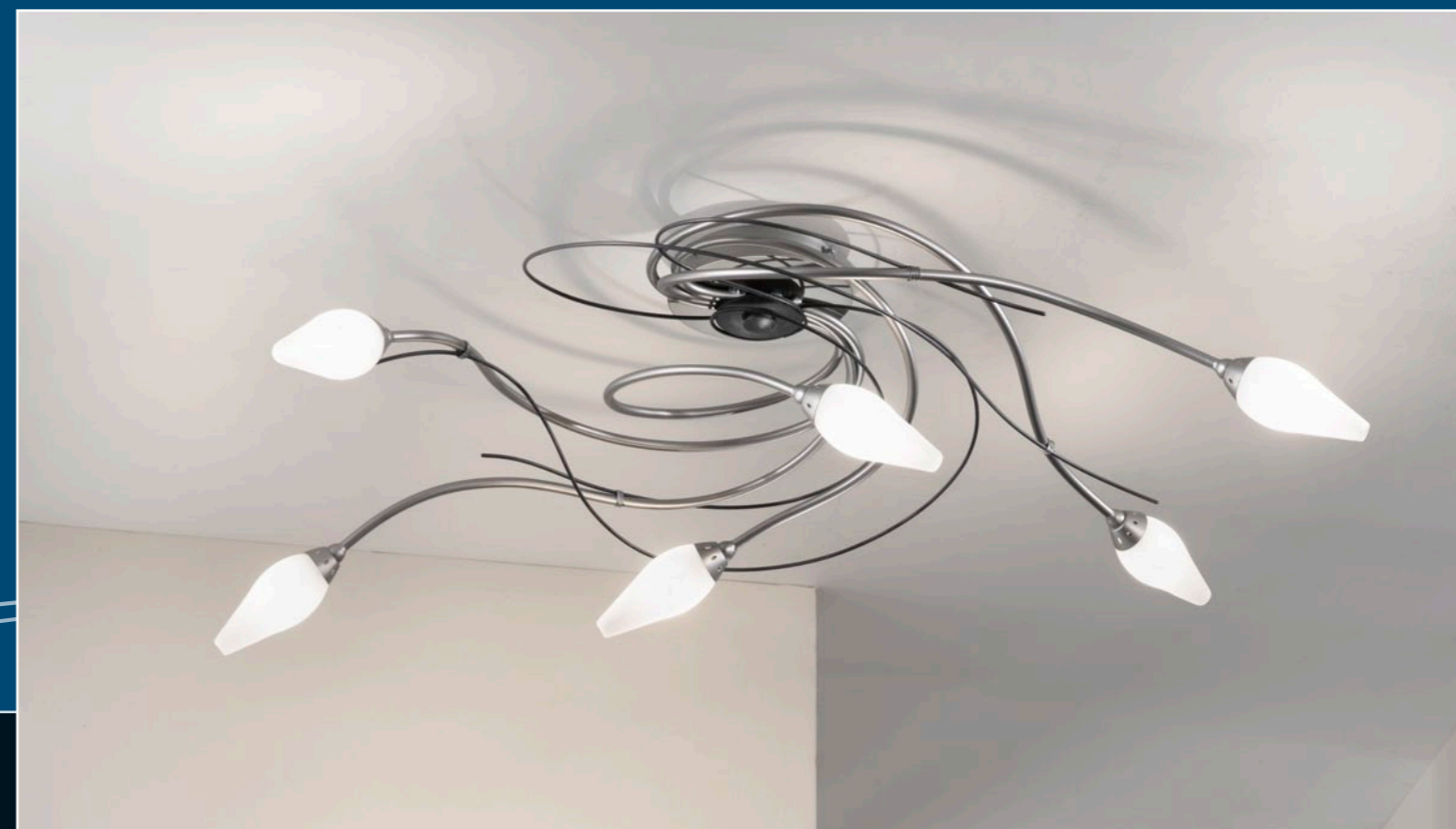


↑ **1832/A3 ARMONIA**  
**Ral ardesia**  
 Glass 505 - h cm 60x44x25  
 Hal 3 x max 40W G9

↑ **1832/P5 ARMONIA**  
**Ral ardesia**  
 Glass 505 - h cm 195x62x50  
 Hal 5 x max 40W G9

↗ **1832/8 ARMONIA**  
**Ral ardesia**  
 Glass 505 - Ø cm 90x42 h  
 Hal 8 x max 40W G9

→ **1832/6PL ARMONIA**  
**Ral ardesia**  
 Glass 505 - h cm 32X90X52  
 Hal 6 x max 40W G9





# LOOP

*designer* Arch. Leonardo Scagli



↑ **1873/A2 LOOP Oro**  
h cm 27x20x16  
2 x 1,2W LED



→ **1873/3SG LOOP Oro**  
Ø cm 75 x h min 60 - max 160  
3 x Hal max 75W GU10



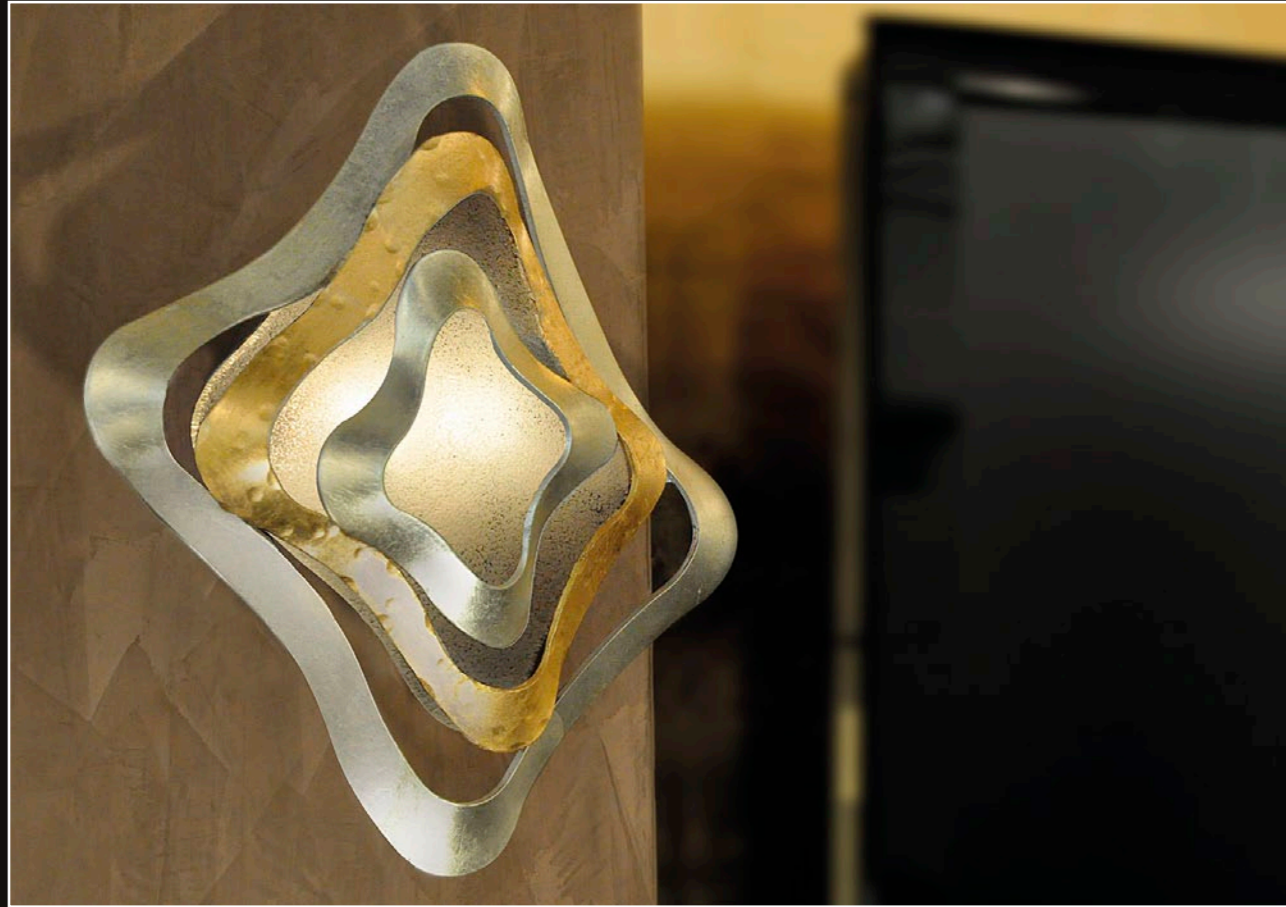


← **1873/3S LOOP Corten**  
Ø cm 50 x h min 55 - max 100  
3 x Hal max 50W GU10

↑ **1873/B2 LOOP Corten**  
Ø cm 19x35 h  
1 x 1,2W LED + 1 x 3W LED

# GIOIELLO

*designer* Arch. Leonardo Scagli



↙ **1844/A2 GIOIELLO Argento oro**  
Glass 548 - h cm 30x30x9  
Hal 2 x max 40W G9

↘ **1844/A2 GIOIELLO Bronzo cannella**  
Glass 548 - h cm 30x30x9  
Hal 2 x max 40W G9

↑ **1844/1S GIOIELLO Bronzo cannella**  
Glass 550-552 - h max cm 80x62x58  
max 30W Electronic Lamp E27







← **1844/2PL GIOIELLO Ral nero**  
 Glass 550 - h cm 25x62x58  
 2 x max 30W Electronic Lamp E27

↑ **1844/SP GIOIELLO Ral nero**  
 Glass 551  
 h cm 80x74



# DOGE

*designers* Arch. Marzia Bandini e Arch. Massimo Sacconi



↑ **1849/3S DOGE Oro décapé**  
 Glass 560 - Ø cm 62 x h min 50 - max 120  
 Hal 3 x max 150W E27

↗ **1849/3PLG DOGE Ruggine oro**  
 Glass 560 - Ø cm 70x26 h  
 Hal 3 x max 150W E27

→ **1849/AM DOGE Ruggine oro**  
 Glass 561 - h cm 30x35x20  
 Hal max 150W R7s





# IRIDE

*designer* Alberto Scagli





↑ **1698/8 IRIDE Brina**  
 Ø cm 88x77 h  
 8 x max 60W E14

→ **1698/12 IRIDE Brina**  
 Ø cm 100x90 h  
 12 x max 60W E14





↑ **1698/8 IRIDE Oro**  
 Ø cm 88x77 h  
 8 x max 60W E14

↗ **1698/5 IRIDE Ardesia**  
 Ø cm 66x64 h  
 5 x max 60W E14

→ **1698/A2 IRIDE Ardesia**  
 h cm 40x38x23  
 2 x max 60W E14





# PARFUM

*designer* Arch. Leonardo Scagli



↑ **1867/10 PARFUM Ottone nichel**  
 Glass 589 - Ø cm 80x55 h  
 Hal 10 x max 40W G9

→ **1867/5PL PARFUM Ottone nichel**  
 Glass 589 - Ø cm 55x32 h  
 Hal 5 x max 40W G9

↗ **1867/5 PARFUM Ottone nichel**  
 Glass 589 - Ø cm 55x40 h  
 Hal 5 x max 40W G9







↑ **1867/10PL PARFUM**  
**Acciaio ardesia**  
 Glass 589 - Ø cm 80x41 h  
 Hal 10 x max 40W G9

↗ **1867/3PL PARFUM**  
**Acciaio ardesia**  
 Glass 589 - Ø cm 40x22 h  
 Hal 3 x max 40W G9

→ **1867/A2 PARFUM**  
**Acciaio ardesia**  
 Glass 589 - h cm 30x28x22  
 Hal 2 x max 40W G9

↘ **1867/B1 PARFUM**  
**Acciaio ardesia**  
 Glass 589 - Ø cm 18x35 h  
 Hal max 40W G9

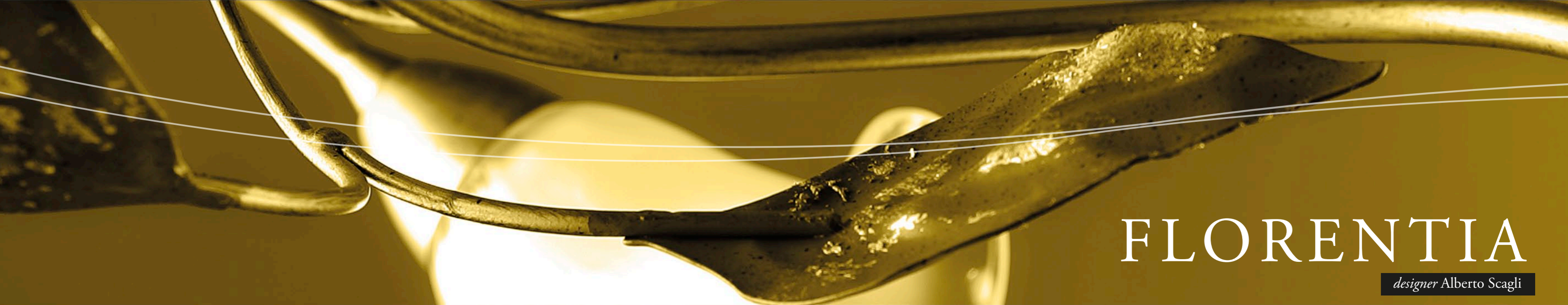




↙ **1867/5S PARFUM Ottone nichel**  
 Glass 589 - Ø cm 55x32 h  
 Hal 5 x max 40W G9

← **1867/A2 PARFUM Ottone nichel**  
 Glass 589 - h cm 30x28x22  
 Hal 2 x max 40W G9

↑ **1867/10S PARFUM Ottone nichel**  
 Glass 589 - Ø cm 80x55 h  
 Hal 10 x max 40W G9



# FLORENTIA

*designer* Alberto Scagli





↑ **1814/6 FLORENTIA**  
**Mogano oro**  
 Glass 413 - Ø cm 77x35 h  
 6 x max 40W E14

↗ **1814/P4 FLORENTIA**  
**Mogano oro**  
 Glass 413 - Ø cm 40x187 h  
 4 x max 40W E14

→ **1814/6PL FLORENTIA**  
**Mogano oro**  
 Glass 413 - Ø cm 76x33 h  
 6 x max 40W E14





← **1814/B1 FLORENTIA**  
**Porpora**  
 Glass 413 - Ø cm 20x36 h  
 max 40W E14

↖ **1814/A2 FLORENTIA**  
**Porpora**  
 Glass 413 - h cm 35x25x14  
 2 x max 40W E14

↑ **1814/9 FLORENTIA**  
**Porpora**  
 Glass 413 - Ø cm 96x43 h  
 9 x max 40W E14

↑ **1814/3PL FLORENTIA**  
**Porpora**  
 Glass 413 - Ø cm 52x32 h  
 3 x max 40W E14



# TUSCANIA / INTRECCIO

*designers* Arch. Marzia Bandini e Arch. Massimo Sacconi





↑ **1507/3 TUSCANIA Peltro**  
 Glass 54 - Ø cm 76x73 h  
 Hal 3 x max 150W E14

→ **1507/AM TUSCANIA Oro**  
 Glass 112 - h cm 42x30x12  
 Hal max 150W R7s

↗ **1507/1 TUSCANIA Oro**  
 Glass 31 - Ø cm 46x62 h  
 Hal max 250W E27





↖ **1660/3PL INTRECCIO Peltro**  
Glass 285 - Ø cm 60x56 h  
Hal 3 x max 150W E27



← **1660/1PL INTRECCIO Peltro**  
Glass 282 - Ø cm 52x35 h  
Hal max 250W E27

↑ **1660/P INTRECCIO Peltro**  
Glass 283 - Ø cm 56x181 h  
Hal max 250W E27





# SHANGHAI

*designer* Arch. Leonardo Scagli



← **1870/6PL SHANGHAI**  
**Brownies oro**  
 Glass 591 - Ø cm 70x20 h  
 Hal 6 x max 40W G9



↙ **1870/P5 SHANGHAI**  
**Brownies oro**  
 Glass 591 - Ø cm 35x195 h  
 Hal 5 x max 40W G9

↑ **1870/8 SHANGHAI**  
**Brownies oro**  
 Glass 591 - Ø cm 90x52 h  
 Hal 8 x max 40W G9



← **1870/A2 SHANGHAI**  
Bianco mat nichel  
Glass 591 - h cm 62x21x9  
Hal 2 x max 40W G9

↙ **1870/SP SHANGHAI**  
Bianco mat nichel  
h cm 100x64

↑ **1870/6 SHANGHAI**  
Antracite nichel  
Glass 591 - Ø cm 60x18 h  
Hal 6 x max 40W G9

↑ **1870/3PL SHANGHAI**  
Antracite nichel  
Glass 591 - Ø cm 60x18 h  
Hal 3 x max 40W G9



**LUNA**  
*designer* Arch. Leonardo Scagli





↑ **1865/9 LUNA**  
Ottone nichel  
Glass 576 - Ø cm 76x30 h  
Hal 9 x max 40W G9

↗ **1865/3 LUNA**  
Ottone nichel  
Glass 576 - Ø cm 60x20 h  
Hal 3 x max 40W G9

→ **1865/A2 LUNA**  
Ottone nichel  
Glass 576 - h cm 29x40x20  
Hal 2 x max 40W G9

↘ **1865/A1 LUNA**  
Ottone nichel  
Glass 576 - h cm 28x11x16  
Hal max 40W G9





↑ **1865/6 LUNA**  
Moka nichel  
Glass 576 - Ø cm 70x22 h  
Hal 6 x max 40W G9

↑ **1865/5PL LUNA**  
Moka nichel  
Glass 576 - Ø cm 62x22 h  
Hal 5 x max 40W G9

→ **1865/B2 LUNA**  
Moka nichel  
Glass 576 - Ø cm 32x41 h  
Hal 2 x max 40W G9

↗ **1865/P5 LUNA**  
Moka nichel  
Glass 576 - Ø cm 50x184 h  
Hal 5 x max 40W G9





# FONTANA

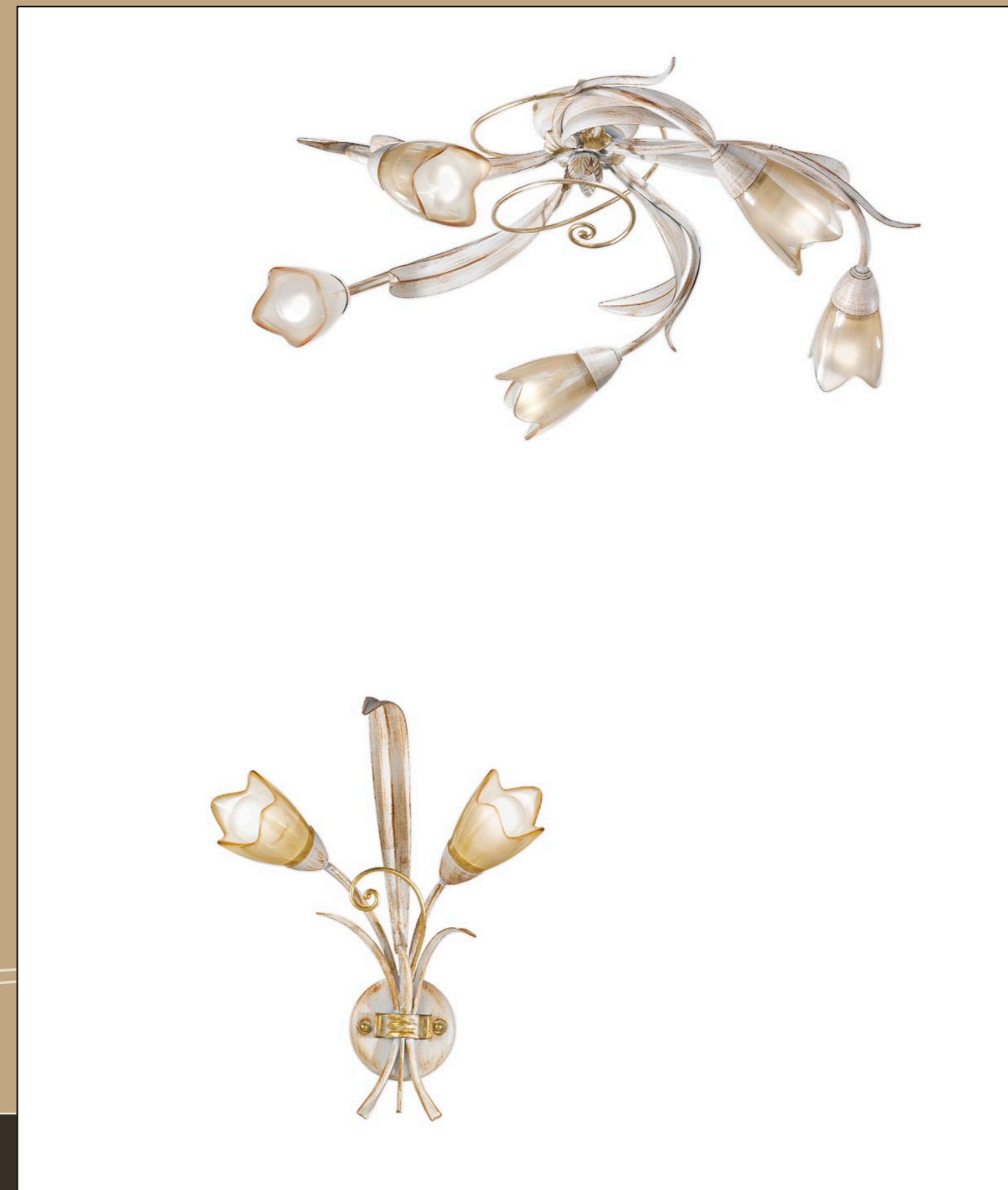
*designer* Arch. Leonardo Scagli



↑ **1805/9 FONTANA Faggio**  
 Glass 391 - Ø cm 78x56 h  
 9 x max 40W E14

→ **1805/A2 FONTANA Faggio**  
 Glass 391 - cm 37x30x20  
 2 x max 40W E14

↗ **1805/5PL FONTANA Faggio**  
 Glass 391 - Ø cm 66x24 h  
 5 x max 40W E14







← **1805/B1 FONTANA Salvia**  
 Glass 235 - h cm 41x18x16  
 max 40W E14



↖ **1805/6 FONTANA Salvia**  
 Glass 235 - Ø cm 62x51 h  
 6 x max 40W E14



↑ **1805/A2 FONTANA Salvia**  
 Glass 235 - cm 37x30x20  
 2 x max 40W E14



# FUTURA

*designer* Alberto Scagli



↑ **1536/A1 FUTURA Peltro**  
Glass 121 - h cm 37x16x28  
Hal max 150W E14



→ **1565/24 FUTURA Peltro oro**  
Glass 373 - Ø cm 190x183 h  
24 x max 60W E14



← **1565/16 FUTURA Terra oro**  
Glass 165 - Ø cm 120x105 h  
16 x max 60W E14

↑ **1565/10 FUTURA Oro**  
Glass 116 - Ø cm 86x82 h  
10 x max 60W E14



← **1565/A2 FUTURA Brina**  
Glass 116 - h cm 44x37x21  
2 x max 60W E14

↖ **1565/5 FUTURA Brina**  
Glass 116 - Ø cm 66x70 h  
5 x max 60W E14

↑ **1565/A2 FUTURA Terra oro**  
Glass 165 - h cm 44x37x21  
2 x max 60W E14



# MISS IRONY

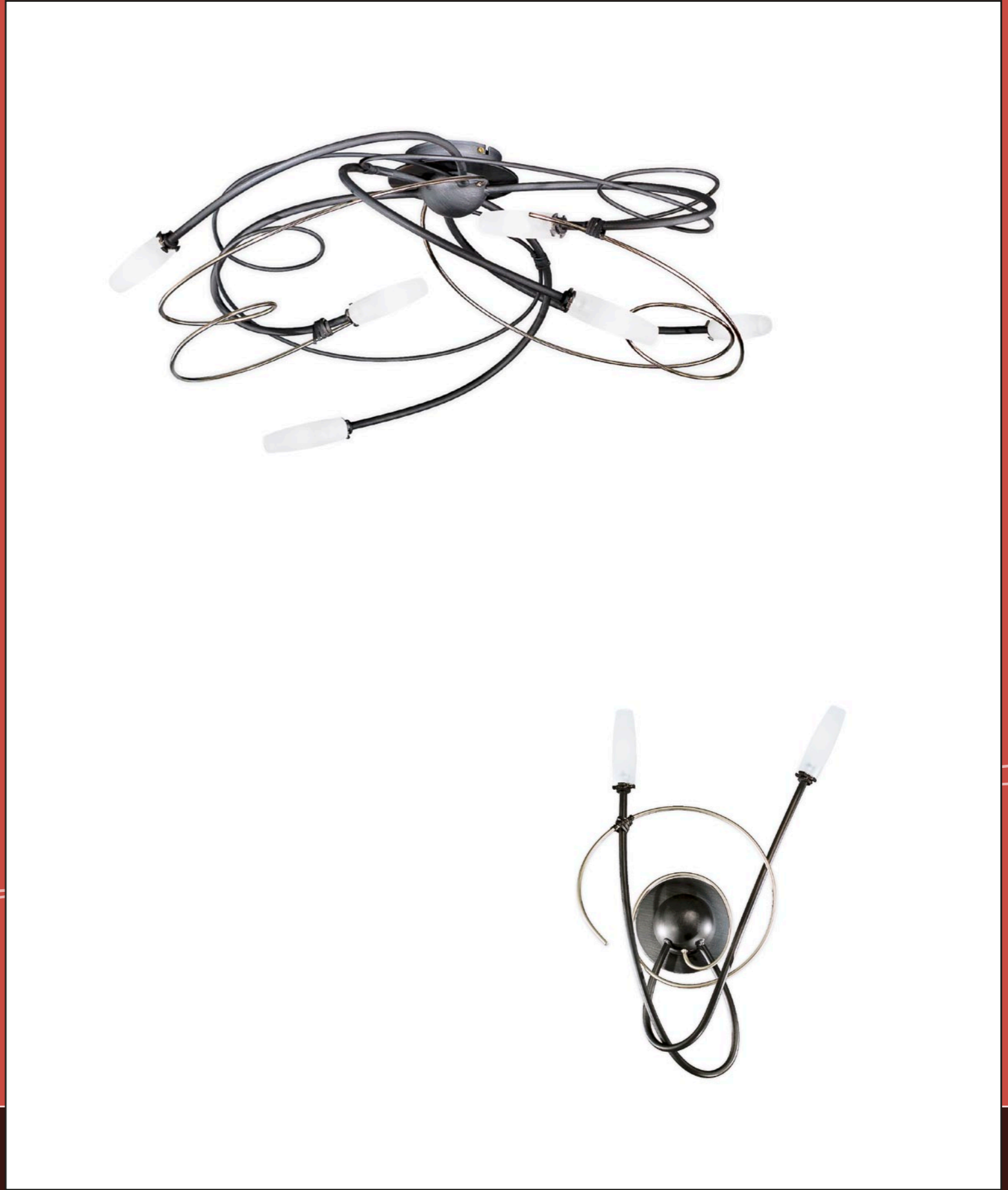
*designers* Arch. Marzia Bandini e Arch. Massimo Sacconi



↑ **1681/8 MISS IRONY**  
Ardesia nichel  
Glass 347 - h cm 40x110x95  
Hal 8 x max 40W G9

↗ **1681/6PL MISS IRONY**  
Ardesia nichel  
Glass 347 - h cm 33x75x67  
Hal 6 x max 40W G9

→ **1681/A2P MISS IRONY**  
Ardesia nichel  
Glass 347 - h cm 50x30x18  
Hal 2 x max 40W G9

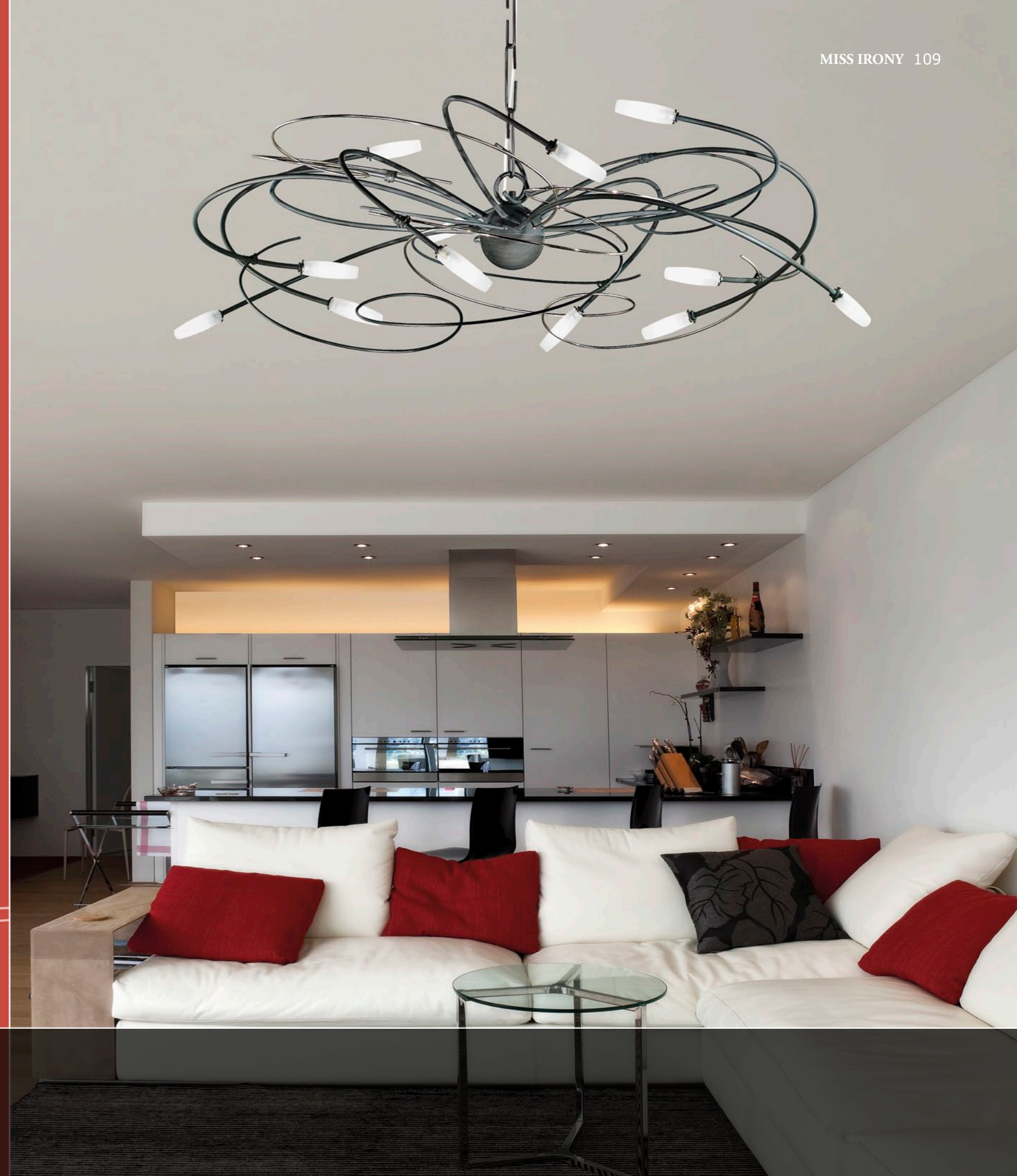




↑ **1681/8PL MISS IRONY**  
 Ardesia nichel  
 Glass 347 - h cm 33x110x95  
 Hal 8 x max 40W G9

↗ **1681/6 MISS IRONY**  
 Ardesia nichel  
 Glass 347 - h cm 40x75x67  
 Hal 6 x max 40W G9

→ **1681/12 MISS IRONY**  
 Ardesia nichel  
 Glass 347 - h cm 46x135x112  
 Hal 12 x max 40W G9





## TUSCANIA

**Components/features:** Scavo glass

**Suggested finishing:** Oro - Peltro



| Article | Page | Description          |
|---------|------|----------------------|
| 1507/1  | 75   | 1 light suspension   |
| 1507/3  | 74   | 3 light chandelier   |
| 1507/AM | 75   | 1 light wall bracket |

## FUTURA

**Components/features:** White glass (VET116) or yellow glass (VET165)

**Suggested finishing:** Brina - Peltro - Peltro oro - Terra oro - Oro

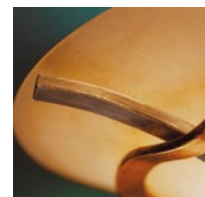


| Article | Page      | Description          |
|---------|-----------|----------------------|
| 1536/A1 | 98        | 1 light wall bracket |
| 1565/5  | 102       | 5 light chandelier   |
| 1565/10 | 101       | 10 light chandelier  |
| 1565/16 | 100       | 16 light chandelier  |
| 1565/24 | 99        | 24 light chandelier  |
| 1565/A2 | 102 - 103 | 2 light wall bracket |

## INTRECCIO

**Components/features:** Scavo glass - Basement in stone

**Suggested finishing:** Peltro

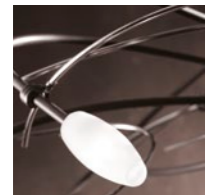


| Article  | Page | Description          |
|----------|------|----------------------|
| 1660/1PL | 76   | 1 light ceiling lamp |
| 1660/3PL | 76   | 3 light ceiling lamp |
| 1660/P   | 77   | 1 light floor lamp   |

## MISS IRONY

**Components/features:** Pyrex

**Suggested finishing:** Ardesia nichel



| Article  | Page | Description          |
|----------|------|----------------------|
| 1681/6   | 108  | 6 light chandelier   |
| 1681/6PL | 107  | 6 light ceiling lamp |
| 1681/8   | 106  | 8 light chandelier   |
| 1681/8PL | 108  | 8 light ceiling lamp |
| 1681/12  | 109  | 12 light chandelier  |
| 1681/A2P | 107  | 2 light wall bracket |

## IRIDE

**Components/features:** Bobeche and pendant in crystal

**Suggested finishing:** Ardesia - Brina - Oro

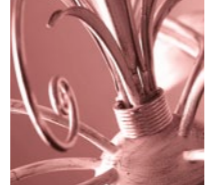


| Article | Page    | Description          |
|---------|---------|----------------------|
| 1698/5  | 57      | 5 light chandelier   |
| 1698/8  | 54 - 56 | 8 light chandelier   |
| 1698/12 | 55      | 12 light chandelier  |
| 1698/A2 | 57      | 2 light wall bracket |

## FONTANA

**Components/features:** White glass (VET235) or amber glass (VET391)

**Suggested finishing:** Faggio - Salvia



| Article  | Page    | Description          |
|----------|---------|----------------------|
| 1805/5PL | 93      | 5 light ceiling lamp |
| 1805/6   | 94      | 6 light chandelier   |
| 1805/9   | 92      | 9 light chandelier   |
| 1805/A2  | 93 - 95 | 2 light wall bracket |
| 1805/B1  | 94      | 1 light table lamp   |

## FLORENTIA

**Components/features:** Murano glass

**Suggested finishing:** Mogano oro - Porpora



| Article  | Page | Description          |
|----------|------|----------------------|
| 1814/3PL | 71   | 3 light ceiling lamp |
| 1814/6   | 68   | 6 light chandelier   |
| 1814/6PL | 69   | 6 light ceiling lamp |
| 1814/9   | 71   | 9 light chandelier   |
| 1814/A2  | 70   | 2 light wall bracket |
| 1814/B1  | 70   | 1 light table lamp   |
| 1814/P4  | 69   | 4 light floor lamp   |

## SIBERIA

**Components/features:** Murano glass

**Suggested finishing:** Argento acido - Bianco oro - Oro acido



| Article  | Page    | Description          |
|----------|---------|----------------------|
| 1818/1SG | 12      | 1 light suspension   |
| 1818/3SR | 16      | 3 light suspension   |
| 1818/5   | 13      | 5 light chandelier   |
| 1818/5PL | 11      | 5 light ceiling lamp |
| 1818/10  | 10      | 10 light chandelier  |
| 1818/16  | 15      | 16 light chandelier  |
| 1818/24  | 17      | 24 light chandelier  |
| 1818/A1  | 14      | 1 light wall bracket |
| 1818/A2  | 11 - 12 | 2 light wall bracket |
| 1818/P1  | 16      | 1 light floor lamp   |

## ARMONIA

**Components/features:** Pyrex

**Suggested finishing:** Ral ardesia - Tabacco oro

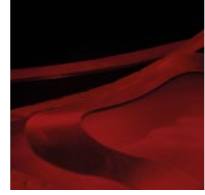


| Article  | Page | Description          |
|----------|------|----------------------|
| 1832/3PL | 32   | 3 light ceiling lamp |
| 1832/6   | 33   | 6 light chandelier   |
| 1832/6PL | 35   | 6 light ceiling lamp |
| 1832/8   | 35   | 8 light chandelier   |
| 1832/A2  | 32   | 2 light wall bracket |
| 1832/A3  | 34   | 3 light wall bracket |
| 1832/B1  | 32   | 1 light table lamp   |
| 1832/P5  | 34   | 5 light floor lamp   |

## GIOIELLO

**Components/features:** Murano glass

**Suggested finishing:** Bronzo cannella - Argento oro - Ral nero



| Article  | Page | Description          |
|----------|------|----------------------|
| 1844/1S  | 45   | 1 light suspension   |
| 1844/2PL | 46   | 2 light ceiling lamp |
| 1844/A2  | 44   | 2 light wall bracket |
| 1844/SP  | 47   | mirror               |

## DOGE

**Components/features:** Screen printed glass – Swarovski crystal

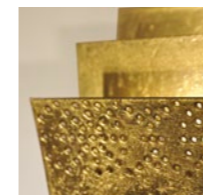
**Suggested finishing:** Oro décapé - Ruggine oro



| Article   | Page | Description              |
|-----------|------|--------------------------|
| 1849/3S   | 50   | 3 light suspension       |
| 1849/3PLG | 51   | 3 light big ceiling lamp |
| 1849/AM   | 51   | 1 light wall bracket     |

## VIRGOLA

**Suggested finishing:** Argento frisé - Gesso - Oro frisé



| Article  | Page | Description              |
|----------|------|--------------------------|
| 1855/A1E | 29   | 1 LED light marker       |
| 1855/A2L | 26   | 2 LED light wall bracket |
| 1855/A2P | 27   | 2 LED light wall bracket |
| 1855/A3  | 27   | 3 LED light wall bracket |

## TWIST

**Components/features:** Swarovski brass

**Suggested finishing:** Argento - Gesso - Oro



| Article  | Page | Description              |
|----------|------|--------------------------|
| 1857/3PL | 28   | 3 light ceiling lamp     |
| 1857/A2  | 29   | 2 LED light wall bracket |

## LUNA

**Components/features:** Murano glass

**Suggested finishing:** Moka nichel - Ottone nichel



| Article  | Page | Description          |
|----------|------|----------------------|
| 1865/3   | 87   | 3 light chandelier   |
| 1865/5PL | 88   | 5 light ceiling lamp |
| 1865/6   | 88   | 6 light chandelier   |
| 1865/9   | 86   | 9 light chandelier   |
| 1865/A1  | 87   | 1 light wall bracket |
| 1865/A2  | 87   | 2 light wall bracket |
| 1865/B2  | 89   | 2 light table lamp   |
| 1865/P5  | 89   | 5 light floor lamp   |



Targhetta di garanzia Masca  
Masca warranty label

Nelle pagine precedenti sono elencati tutti i prodotti presenti nel catalogo "Colors of Beauty" ordinati per codice di articolo.

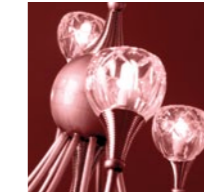
Nella descrizione viene indicato la tipologia di articolo e i componenti utilizzati.

Tutti gli articoli possono essere realizzati in finiture diverse da quelle suggerite facendone richiesta all'azienda. Ogni prodotto può essere personalizzato, sia nelle dimensioni che nelle caratteristiche illuminotecniche. Inoltre il nostro project department è in grado di sviluppare prodotti su specifiche indicazioni del cliente. Su ogni creazione Masca viene applicata un'apposita targhetta con il marchio Masca che ne garantisce l'originalità. Ogni prodotto è interamente fabbricato a mano. Le eventuali piccole diversità che si possono riscontrare sono la garanzia che ciascun articolo viene fatto in maniera artigianale, rendendolo un pezzo unico. Masca si riserva di apportare modifiche e/o migliorie a parti o accessori che non alterino sostanzialmente le forme e le caratteristiche estetiche degli articoli presentati nel catalogo.

## PARFUM

**Components/features:** Crystal shade

**Suggested finishing:** Acciaio ardesia - Ottone nichel

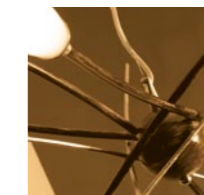


| Article   | Page    | Description           |
|-----------|---------|-----------------------|
| 1867/3PL  | 63      | 3 light ceiling lamp  |
| 1867/5    | 61      | 5 light chandelier    |
| 1867/5PL  | 61      | 5 light ceiling lamp  |
| 1867/5S   | 64      | 5 light suspension    |
| 1867/10   | 60      | 10 light chandelier   |
| 1867/10PL | 62      | 10 light ceiling lamp |
| 1867/10S  | 65      | 10 light suspension   |
| 1867/A2   | 63 - 64 | 2 light wall bracket  |
| 1867/B1   | 63      | 1 light table lamp    |

## SHANGHAI

**Components/features:** Pyrex

**Suggested finishing:** Antracite nichel – Bianco mat nichel – Brownies oro

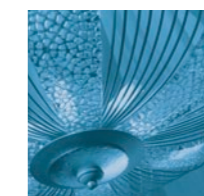


| Article  | Page | Description          |
|----------|------|----------------------|
| 1870/3PL | 83   | 3 light ceiling lamp |
| 1870/6   | 83   | 6 light chandelier   |
| 1870/6PL | 80   | 6 light ceiling lamp |
| 1870/8   | 81   | 8 light chandelier   |
| 1870/A2  | 82   | 2 light wall bracket |
| 1870/P5  | 80   | 5 light floor lamp   |
| 1870/SP  | 82   | mirror               |

## MARRAKECH

**Components/features:** Murano glass decorated with silver or gold leaf

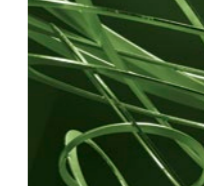
**Suggested finishing:** Corten argento – Oro décapé



| Article  | Page    | Description          |
|----------|---------|----------------------|
| 1871/6PL | 23      | 6 light ceiling lamp |
| 1871/6S  | 22      | 6 light chandelier   |
| 1871/9S  | 20      | 9 light chandelier   |
| 1871/A1  | 21 - 23 | 1 light wall bracket |

## LOOP

**Suggested finishing:** Corten - Oro



| Article  | Page | Description              |
|----------|------|--------------------------|
| 1873/3S  | 40   | 3 light suspension       |
| 1873/3SG | 39   | 3 light big suspension   |
| 1873/A2  | 38   | 2 LED light wall bracket |
| 1873/B2  | 41   | 2 LED light table lamp   |

The preceding pages provide a list of all the products of the "Colors of Beauty" catalogue range, in order of item number.

There is a description of the product type and the components used.

By request, all the items can be made with a variety of fixtures from those suggested. Each product can be customized both in terms of dimensions and technical characteristics. Our project department can also develop products to meet specific customer requirements. Each Masca product is labelled with the Masca brand which guarantees its authenticity.

Masca products are entirely hand made. The small differences that may be observed are a guarantee that each article has been crafted by hand to achieve a unique product. Masca reserves the right to change and/or improve parts or accessories without substantially altering the shape and the aesthetic characteristics of the products presented in the catalogue.

GRAPHIC DESIGN  
STUDIO BENVENUTI - FIRENZE

PHOTOGRAPHY  
COM & MEDIA - SCANDICCI  
FOTO STUDIO AG DI ALESSANDRO GHEDINA - FIRENZE  
QUASAR - PIOMBINO DESE  
SM PHOTO ART - FIRENZE

PRINTED ON MARCH 2013 BY  
FEDERIGHI COLORGRAFICHE - CERTALDO

ACKNOWLEDGEMENTS  
KEOMA SALOTTI - MATERA



# MASCA

FIRENZE

*All our production complies with community directives on:*

“low voltage”(2006/95/CE)

CEI EN 60598-1 VIII edizione

CEI EN 60598-1/A1: 2007

CEI EN 60598-2-1 II edizione

CEI EN 60598-2-4 IV edizione

“electromagnetic compatibility”(EMC 2004/108/CE)

CEI EN 55015 V ed.var. A1 e A2

CEI EN 61000-3-2 IV ed.

CEI EN 61000-3-3 I ed. var. A1

CEI EN 61000-4-2 I ed. var. A1 e A2

CEI EN 61000-4-4 II ed.

CEI EN 61000-4-5 II ed.

CEI EN 61000-4-6 I ed. var. A1

CEI EN 61000-4-3 III ed.

CEI EN 61000-4-11 II ed.

CEI EN 61547 I ed. var. A1

RHOS 2002/95 RAE 2002/96.

GOST-R  
GOST-UA





MASCA

**Masca** s.r.l.

*Showroom and Laboratories*

Via Pistoiese, 1 - 50013 San Donnino (Florence) - ITALY

Tel. +39 055.8999155 +39 055.8961839

Fax +39 055.8998565

Web site: [www.masca.it](http://www.masca.it)

Mail address: [masca@masca.it](mailto:masca@masca.it)